



RESEARCH UPDATE

Dave Storms, CFA

Dave@stonegateinc.com

214-987-4121

Market Statistics in USD

Price	\$ 1.07
52 week Range	\$1.00 - \$11.36
Daily Vol (3-mo. average)	66,569
Market Cap (M)	\$ 30.9
Enterprise Value (M)	\$ 613.9
Shares Outstanding: (M)	12.9
Float (M)	8.1
Public Ownership	25.1%
Institutional Ownership	37.4%

Financial Summary in USD

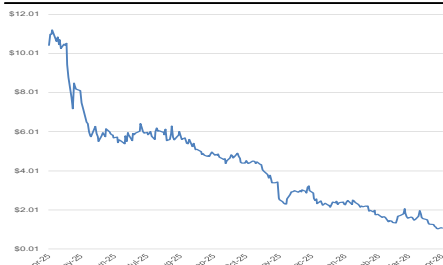
Cash (M)	\$ 32.9
Cash/Share	\$ 2.54
Debt (M)	\$ 672.6
Equity (M)	\$ (5.3)
Equity/Share	\$ (0.41)

FYE: Dec	2025	2026E	2027E
<i>(all figures in M, expect per share information)</i>			

Rev	\$ 361.8	\$ 264.1	\$ 471.6
Chng%	-55%	-27%	79%

Adj. EBITDA	\$ (35.1)	\$ 21.4	\$ 109.2
Net Income	\$ (497.8)	\$ (205.6)	\$ (143.4)
EPS	\$ (20.17)	\$ (9.83)	\$ (6.95)

EV/Revenue	1.7x	2.3x	1.3x
EV/EBITDA	-17.1x	28.7x	5.6x
P/E	-0.1x	-0.1x	-0.2x



COMPANY DESCRIPTION

GoHealth, Inc. operates as a health insurance marketplace and Medicare-focused digital health company in the United States. The company operates a technology platform that leverages machine-learning algorithms of insurance behavioral data to optimize the process for helping individuals find the health insurance plan for their specific needs. It provides Medicare plans, including Medicare Advantage, Medicare Supplement and Prescription Drug, and Medicare Special Needs Plans. The company also offers partner marketing services. It sells its products through carriers and online platform, as well as independent and external agencies. The Company was founded in 2001 and is headquartered in Chicago, Illinois.

GO HEALTH INC. (NASDAQ: GOCO)

Company Updates

GoHealth's 4Q25 results continued to reflect a Medicare Advantage environment shaped by tighter carrier discipline, with management prioritizing retention, member quality, and liquidity over volume. FY25 net revenue was \$361.8M, implying a materially lower 4Q25 revenue base y/y as the intentional Medicare Advantage pullback continued through AEP. Management reiterated that carriers remain focused on margin stability, renewal durability, and disciplined unit economics over broad enrollment growth. Against that backdrop, GoHealth remains focused on protecting the durability of its back book and related ~\$925M commissions receivable asset, preserving strategic flexibility, and investing selectively in SNPs, automation, and AI to improve efficiency and positioning when conditions normalize. Importantly, the emphasis on retention also supports the long-term value and durability of the commissions receivable. In our view, the quarter did little to alter the near-term thesis, but reinforced management's focus on durability, cash discipline, and longer-term optionality.

Strategic Initiatives: During 4Q25 and FY25, GoHealth continued aligning the business around liquidity, capital structure flexibility, and strategic optionality rather than near-term top-line expansion. Management paired ongoing cost and cash optimization with a more formal strategic framework, including creation of a Board Transformation Committee to evaluate refinancings, securitizations, mergers, acquisitions, restructurings, and other strategic alternatives. The Company also continues to view the fragmented broker landscape as a consolidation opportunity, while selectively investing in automation, AI, and GoHealth Protect to improve efficiency, diversify the platform, and support longer-term flexibility. Overall, we view these actions as consistent with a management team focused on protecting the commissions receivable asset, preserving financial flexibility, and maintaining multiple strategic paths as broader Medicare Advantage conditions remain dynamic.

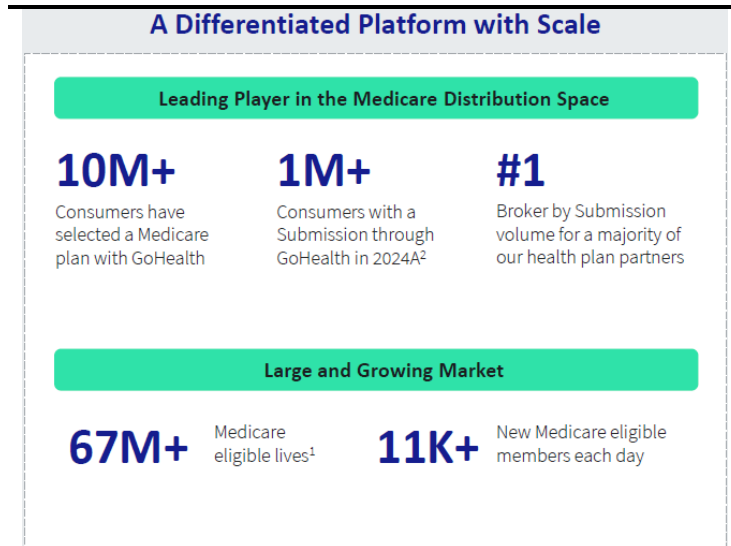
Unit Economics: In FY25, sales per submission declined 14.5% y/y to \$668, reflecting the deliberate Medicare Advantage pullback, lower-value volume, and an evolving revenue mix. Submissions declined 47.4% to 534,657, while direct operating cost per submission increased 2.8% to \$594, driving the Sales/Direct Operating Cost of Submission ratio down to 1.1x from 1.4x in FY24. Management attributed the weaker unit economics primarily to lower sales, partly offset by cost actions, as the intentional pullback reduced scale and pressured cost absorption. More broadly, the business appears to be repositioning around higher-quality cohorts, stronger renewal durability, and a more balanced mix over time, with GoHealth Protect helping diversify revenue beyond traditional Medicare commission streams and SNPs remaining a constructive area of focus. Management also continues targeting lower acquisition and servicing costs through automation, streamlined workflows, and broader operating discipline. In our view, that should support better unit economics over the long term, even as near-term margins remain pressured.

Valuation: We use a EV/EBITDA comp analysis to guide our valuation. We are using an EV/EBITDA range of 6.5x to 7.5x with a midpoint of 7.0x which moves GOCO closer to comp companies. Our EV/EBITDA valuation results in a range of \$3.07 to \$7.85 with a mid-point of \$5.46.

Business Overview

GoHealth, Inc. is a leading health insurance marketplace and Medicare-focused digital health company dedicated to improving access to healthcare across the United States. The Company's mission centers on simplifying the often-complex process of enrolling in health insurance plans, ensuring consumers can make informed decisions that best suit their healthcare needs. By leveraging advanced technology, data analytics, and deep industry expertise, GoHealth matches customers with optimal healthcare policies and carriers. Since its inception, the Company has successfully enrolled millions of individuals in Medicare, as well as individual and family plans.

Exhibit 1: Medicare Business



Source: Company Presentation

Founded with the vision of transforming the health insurance landscape, GoHealth has developed a platform that addresses the challenges consumers face when selecting insurance plans. The subtle differences between plans can lead to significant out-of-pocket expenses or restricted access to essential medications and providers. GoHealth's platform demystifies these complexities, providing clear comparisons and personalized recommendations to guide consumers toward the most suitable options.

Today, GoHealth is the leading player in the Medicare distribution space, having helped over 10 million consumers select a Medicare plan. In 2024 alone, the Company processed over 1,000,000 submissions, reinforcing its position as the #1 broker by submission volume for many of its health plan partners.

GoHealth has evolved significantly from its early days as a high-volume Medicare distributor focused on a health plan-centric telephonic sales approach to becoming a consumer-centric, technology-driven leader in the Medicare space. Initially, the Company relied on large sales and marketing spending to meet annual enrollment period targets, but today, it operates a streamlined, standardized Encompass model that enhances efficiency and reduces revenue risk. Its scale has expanded from merely partnering with major health plans to offering high-quality, five-star plans across all 50 states, ensuring consumers receive the best coverage options. Furthermore, GoHealth has transformed its financial model, shifting from negative cash flow due to high upfront costs to generating substantial cash flow from high-quality enrollments and back-book policies, reinforcing its long-term sustainability and market leadership.

The Company's revenue model primarily hinges on commissions earned from insurance carriers for each policy sold through its platform. These commissions vary based on the type and value of the insurance policy, offering a scalable and performance-based revenue stream. Additionally, GoHealth benefits from renewal commissions, as many health insurance policies renew annually, ensuring ongoing revenue from long-term policyholders.

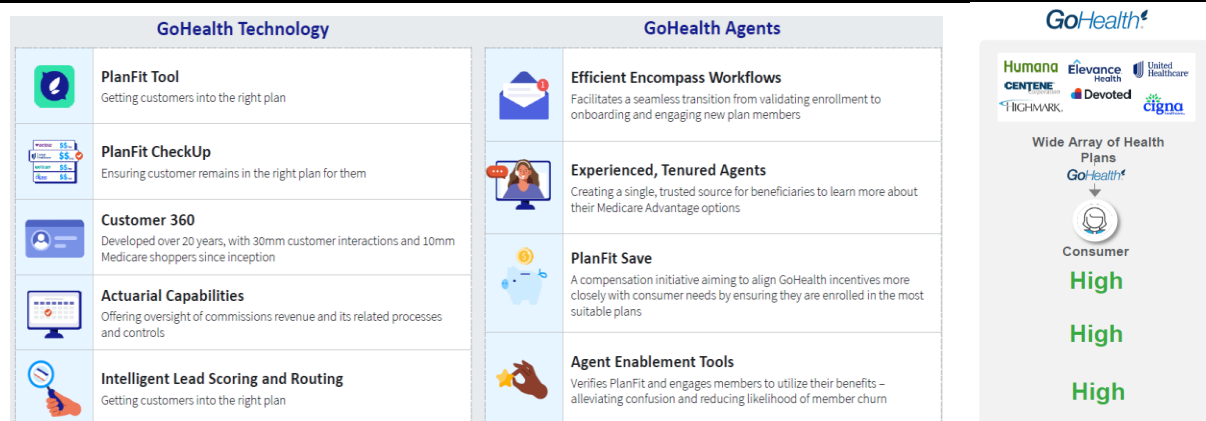
In recent years, GoHealth has expanded its services to capture a broader range of healthcare solutions, reinforcing its commitment to enhancing healthcare accessibility. The Company's dedication to innovation and customer-centric solutions has solidified its position as a trusted intermediary between consumers and insurance providers.

Financial Drivers and Platform Overview

Revenue

- Two Types of Agents:** GoHealth employs two types of agents; Internal agents (“Captive”) and external GoPartner Solutions (“GPS”) agents. Internal captive agents are directly employed by GoHealth and focus on providing personalized service and support to consumers. These services include but are not limited to, assisting and maintaining Medicare-eligible consumers with their enrollment process through GoHealth. Conversely, external GPS agents operate independently but are integrated into GoHealth’s system, allowing them to leverage GoHealth’s technology platform. Importantly, GPS agents generate their own marketing efforts, offering GoHealth’s services to a broader audience while benefiting from the company’s robust infrastructure and resources. This model allows GoHealth to expand its reach and maintain high standards of service and compliance.
- PlanFit Tool:** Through the Company’s Encompass Platform (discussed further below), agents use the PlanFit Tool to determine the optimal plan for a prospective customer. This helps to streamline the process for agents increasing throughput and decreasing costs. For the customers this also ensures that any plan they select is the optimal one for their unique needs, solidifying the relationship that customers have with GOCO.
- Two Types of Contracts:** GoHealth operates with two primary types of contracts; agency and non-agency. Agency contracts are any contract sourced by either Captive agents or GPS agents. These involve commissions from health plan partners for policies sold, including initial and renewal commissions. GOCO will then pay a commission to the agent that sourced this contract. Non-agency contracts involve enrollment and engagement services for which GoHealth is not the agent and is instead generating the lead for the health plan partners. In non-agency contracts GOCO collects fees directly from consumers or health plan partners once the contract is sold and does not receive commissions for renewals.
- Revenue Recognition:** For non-agency contracts GoHealth receives cash fees once the customer is enrolled. For agency contracts GoHealth estimates the amount of revenue that a given contract will generate between initial commissions and renewal commissions known as the Lifetime Value of Commissions (LTV). The Company relies on its historical experience to make these estimations. GOCO re-estimates LTV at a vintage level for all of its outstanding vintages quarterly and makes adjustments as deemed necessary. This approach allows GoHealth to recognize revenue in a manner that matches the expected cash flows from the policies.

Exhibit 2: Differentiated Operating Model



Source: Company Presentation

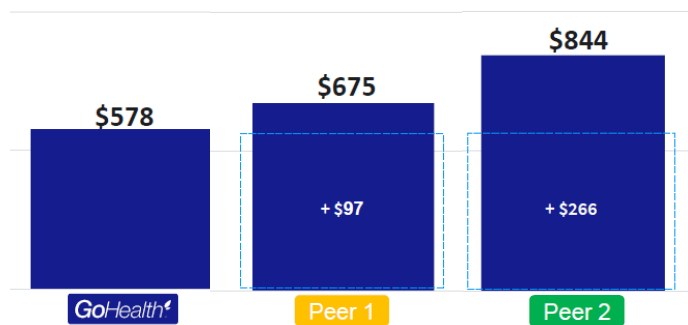
Costs

- **Customer Acquisition Channels:** GoHealth acquires customers through various channels, including direct mail, television, and digital marketing. These channels are optimized to reach a broad audience and drive high-quality leads. As of FY25, Marketing and advertising expenses made up ~32% of revenue, representing the crucial role they play in customer acquisition.
- **Customer Acquisition Cost (CAC):** The average CAC for GoHealth is ~\$594 for FY25, which is competitive compared to industry peers whose CAC can amount to anywhere between ~\$675- \$845 (refer to Exhibit 4). This efficiency is attributed to GoHealth's advanced marketing strategies and technology-driven approach. As a result, GoHealth's costs are coming down due to their effective use of AI and automation, which streamline operations and reduce overhead. This has led to a significant reduction in the Direct Operating Cost per Submission.

Encompass Platform

Exhibit 3: Differentiated Operating Model

- **Technology Stack:** The Encompass platform integrates customer relationship management, agent productivity tools, and advanced data analytics to streamline the insurance enrollment process. This comprehensive “tech stack” enhances operational efficiency and provides a seamless experience for both agents and consumers.



Source: Company Presentation

- **AI-Enabled:** Encompass is powered by AI-driven PlanFit technology, which optimizes plan selection and benefit utilization. This technology ensures that consumers are matched with the best Medicare plans based on their specific needs, resulting in higher satisfaction and retention rates.
- **PlanFit CheckUp:** As part of the Encompass Solution Platform GoHealth’s proprietary PlanFit CheckUp tool helps consumers regularly assess their Medicare plans to ensure they are still appropriate for their needs. This proactive approach builds trust and drives retention by incentivizing agents to provide unbiased advice. As a result, GoHealth fosters long-term relationships with consumers as they feel confident that they are in the best plan for their needs. To incentive agents to provide the best possible outcome for customers, GOCO will still pay a commission even if the agent does not sell a new product. This removes significant amounts of churn from the process, further improving customer relationships.

Ability to Make Acquisitions

- **e-TeleQuote Acquisition:** GoHealth's acquisition of e-TeleQuote Insurance, Inc., added significant value to the company by expanding its agent capacity by around 400 and enhancing its market position ahead of a pivotal Medicare Annual Enrollment Period (“AEP”). The acquisition included approximately \$90.5 million in contract assets and \$22.5 million in cash, reinforcing GoHealth's ability to drive growth through strategic acquisitions.

Market Overview

Segments

The market operates through distinct business segments designed to cater to various aspects of health insurance needs, ensuring comprehensive coverage and specialized services for those who do not get health insurance through their employer. GoHealth primarily provides solutions for customers who qualify for Medicare.

Medicare Segment: This segment focuses on assisting consumers eligible for Medicare, offering a range of plans including Medicare Advantage, Medicare Supplement, and Prescription Drug Plans. GoHealth's platform provides tools and resources to help beneficiaries understand their options and enroll in plans that align with their healthcare needs and financial situations.

- **Part A:** (Hospital Insurance): Covers inpatient hospital stays, skilled nursing facility care, hospice care, and some home health care.
- **Part B:** (Medical Insurance): Includes doctor visits, outpatient care, medical equipment, and preventive services.
- **Part C:** (Medicare Advantage): An alternative to Original Medicare, these plans are offered by private companies approved by Medicare and include Part A, Part B, and usually Part D coverage.
- **Part D:** (Prescription Drug Coverage): Provides coverage for prescription medications, helping to lower prescription drug costs.

Individual and Family Plans (IFP) Segment: This segment is for individuals under 65 and families seeking health insurance, there are various solutions in the market that cater to individuals and family plans. GoHealth aids consumers in comparing plan benefits, costs, and network coverage to make informed decisions.

Small Business Segment: Recognizing the unique needs of small businesses, as small businesses tend to have unique needs with nuanced constraints compared to large employers. Providers service this segment offers guidance on selecting group health plans that balance comprehensive coverage with cost-effectiveness.

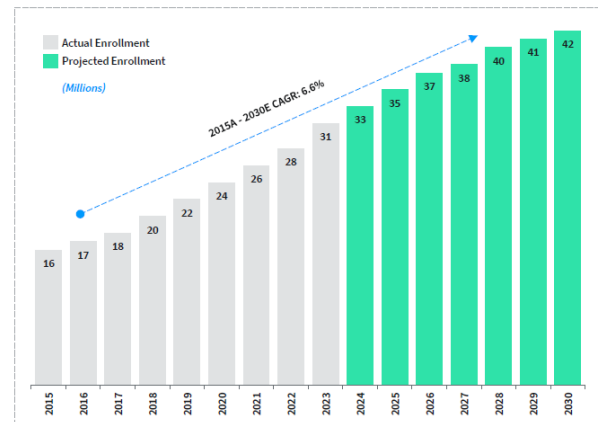
GoHealth Positioning

Technological advancements have transformed how consumers interact with health insurance providers. There is a growing preference for digital platforms that offer personalized plan comparisons, real-time support, and streamlined enrollment processes. GoHealth's user-friendly digital marketplace aligns with this trend, attracting tech-savvy consumers seeking convenient and efficient ways to obtain health coverage. The company's proprietary Encompass Platform integrates various aspects of the insurance enrollment process, enhancing operational efficiency and ensuring a seamless experience for both agents and consumers.

Operating within a complex and ever-evolving regulatory landscape, GoHealth remains agile in adapting to changes in healthcare policies and regulations. This adaptability enables the Company to seize opportunities arising from policy adjustments, such as expanded access to health insurance or modified enrollment

Exhibit 4: Medicare Enrollment Growth

Medicare Advantage Enrollment Growth¹



Source: Company Presentation

procedures, thereby broadening its potential customer base. The Centers for Medicare & Medicaid Services (CMS), as GoHealth's regulator, has acknowledged the Company's efforts in making Medicare more accessible and valuable to consumers, ensuring that GoHealth's platform remains a trusted resource for navigating Medicare options.

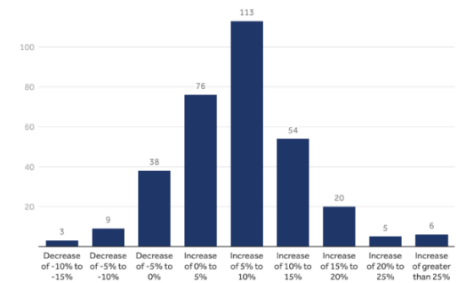
As the U.S. population ages, with individuals becoming eligible for Medicare upon turning 65, GoHealth is well-positioned to serve this expanding demographic. The Company's platform effectively connects with older adults, including those previously disengaged or underinsured, offering them access to Medicare Advantage plans that meet their healthcare needs. The healthcare industry's shift towards digital solutions has increased the demand for online platforms that simplify insurance enrollment. GoHealth's user-friendly digital marketplace aligns with this trend, attracting tech-savvy consumers seeking convenient and efficient ways to obtain health coverage. The Company's proprietary technology, including the AI-driven PlanFit tool, enhances the consumer experience by providing personalized plan recommendations and real-time support.

Risks

- **Debt:** The Company currently has a net debt to equity ratio above 100%. A high level of debt could strain the Company's liquidity, limit its financial flexibility, and increase vulnerability to rising interest rates or operational downturns.
- **Lifetime Value (LTV) Risk:** The Company's valuation and financial projections depend on expected lifetime value (LTV) assumptions of customers. Any miscalculations or shifts in customer behavior could lead to revenue shortfalls.
- **Regulatory Uncertainty:** Changes in healthcare regulations, including those related to Medicare and insurance marketplaces, could significantly impact GoHealth's business model, profitability, and compliance costs. Recent changes from CMS have adjusted the economics for carriers when using GOCO. This has led to the current softness in submissions that both GOCO and its peers have seen in recent quarters. Should this carrier discipline continue, it could become detrimental to the Company's current business model.

Exhibit 5: ACA Marketplace Premiums

Distribution of proposed 2025 rate changes among 324 reviewed ACA Marketplace insurers



Note: 7% is the median increase.

Source: KFF analysis of data from ratereview.healthcare.gov and insurer rate filings

Partner: KFF
Health System Tracker

Source: Health System Tracker

Valuation Overview

We use a EV/EBITDA comp analysis to guide our valuation of GOCO. We are using our expected FY27 EBITDA, which we believe allows us to look through the potentially short term regulatory headwinds. While this is at the low end of historical results it accounts for the recent telegraphed pullback in marketing spend which we anticipate will persist for the coming quarters. Once we account for the recent pullback, we see that GOCO is trading at ~5.6x our forward EBITDA. While we recognize the jarring nature of the Company's recent results, we believe this was well planned and clearly communicated by management, giving us the confidence to look through FY26 and into FY27, when we believe GOCO could return to strong growth, capitalizing on its prudent decision making.

Comparative Analysis (all figures in M, except per share information)

Company Name	Symbol	Price ⁽¹⁾	Mrkt Cap	EV	GPM	BV/Share	EV/Revenue ^(2,3)			EV/EBITDA ^(2,3)			P/E ^(2,3)		
							2025	2026E	2027E	2025	2026E	2027E	2025	2026E	2027E
eHealth, Inc.	EHTH	\$ 1.44	\$ 44.7	\$ 483.9	100.0%	\$ 19.09	1.06x	1.13x	1.07x	6.4x	7.7x	6.9x	N/A	N/A	N/A
SelectQuote, Inc.	SLQT	\$ 0.73	\$ 129.4	\$ 807.1	35.0%	\$ 2.04	0.56x	0.49x	N/A	8.8x	8.8x	N/A	N/A	N/A	N/A
				Average	67.5%	\$ 10.56	0.8x	0.8x	1.1x	7.6x	8.2x	6.9x	N/A	N/A	N/A
				Median	67.5%	\$ 10.56	0.8x	0.8x	1.1x	7.6x	8.2x	6.9x	N/A	N/A	N/A
Crawford & Company	CRD.A	\$ 10.67	\$ 505.7	\$ 710.2	29.0%	\$ 3.54	0.62x	0.54x	0.52x	5.7x	5.5x	5.1x	11.5x	11.2x	10.0x
Goosehead Insurance, Inc.	GSHD	\$ 40.50	\$ 958.5	\$ 1,209.2	46.1%	\$ (3.87)	5.67x	2.91x	2.44x	11.1x	9.8x	8.0x	22.7x	19.8x	15.3x
Hagerty, Inc.	HGTY	\$ 10.92	\$ 1,103.6	\$ 915.9	62.3%	\$ 2.20	1.26x	0.71x	0.60x	5.2x	3.8x	2.9x	29.4x	32.7x	18.4x
Hippo Holdings Inc.	HIPO	\$ 27.21	\$ 706.7	\$ 540.8	50.9%	\$ 16.97	1.40x	0.92x	0.74x	N/A	25.3x	12.8x	13.1x	108.8x	29.9x
Ryan Specialty Holdings, Inc.	RYAN	\$ 35.70	\$ 4,593.5	\$ 8,571.9	41.8%	\$ 5.00	3.56x	2.55x	2.30x	8.7x	8.2x	7.3x	17.7x	16.1x	13.9x
Waterdrop Inc.	WDH	\$ 1.70	\$ 614.8	\$ 480.0	51.1%	\$ 2.04	0.12x	0.10x	0.10x	1.3x	0.8x	0.7x	9.5x	6.9x	5.7x
				Average	46.9%	\$ 4.31	2.1x	1.3x	1.1x	6.4x	8.9x	6.1x	17.3x	32.6x	15.5x
				Median	48.5%	\$ 2.87	1.3x	0.8x	0.7x	5.7x	6.9x	6.2x	15.4x	17.9x	14.6x
GoHealth, Inc.	GOCO	\$ 1.07	\$ 17.4	\$ 613.9	73.4%	\$ 2.34	1.7x	2.3x	1.3x	-17.1x	28.7x	5.6x	-0.1x	-0.1x	-0.2x

(1) Previous day's closing price

(2) Estimates are from Capital IQ

(3) Forward estimates as of calendar year

Source: Company reports, CapitalIQ, Stonegate Capital Partners

When we consider the above, we believe GOCO should be trading in-line with comp multiples, applied to our forecasted EBITDA. When using a forward EV/EBITDA range of 6.5x to 7.5x with a midpoint of 7.0x we arrive at a market cap range of \$8.8M to \$132.5M after accounting for minority interest. This returns a valuation range of \$3.07 to \$7.85 per share, with a midpoint of \$5.46.

	EV/EBITDA		
2027E	6.50x	7.00x	7.50x
EBITDA	109.2	109.2	109.2
TEV	709.9	764.5	819.1
Cash	32.9	32.9	32.9
Debt	672.6	672.6	672.6
Mrkt Cap	70.2	124.8	179.4
Non-Controlling Interest	(30.5)	(54.1)	(77.8)
Mkt Cap to Common	39.7	70.7	101.6
S/O	12.9	12.9	12.9
Price	\$ 3.07	\$ 5.46	\$ 7.85

BALANCE SHEET

GoHealth, Inc.																		
Consolidated Balance Sheets (in US \$M)																		
Fiscal Year End: December																		
	FY 2020	FY 2021	FY 2022	Q1 Mar-23	Q2 Jun-23	Q3 Sep-23	Q4 Dec-23	FY 2023	Q1 Mar-24	Q2 Jun-24	Q3 Sep-24	Q4 Dec-24	FY 2024	Q1 Mar-25	Q2 Jun-25	Q3 Sep-25	Q4 Dec-25	FY 2025
ASSETS																		
Cash and cash equivalents	144.2	84.4	16.5	32.3	25.4	26.4	90.8	90.8	97.8	14.1	35.5	40.9	40.9	22.2	35.6	32.1	32.9	32.9
Accounts receivable, net	14.2	17.3	4.7	26.2	36.0	12.4	0.3	0.3	9.2	13.5	6.9	4.5	4.5	5.9	0.1	0.0	0.1	0.1
Commissions receivable	188.1	268.7	335.8	292.9	294.3	285.9	336.2	336.2	269.8	261.1	270.4	320.4	320.4	207.4	226.2	238.9	239.6	239.6
Prepaid expense and other current assets	45.2	58.7	57.6	24.0	12.4	21.6	49.2	49.2	20.3	12.5	21.3	34.6	34.6	25.4	26.9	16.4	13.2	13.2
Total Current Assets	391.8	429.0	414.6	375.5	368.1	346.3	476.4	476.4	397.1	301.2	334.0	400.4	400.4	260.9	288.8	287.5	285.8	285.8
Commissions receivable - non-current	622.3	993.8	695.6	643.9	617.2	609.8	575.5	575.5	573.3	554.0	627.3	733.2	733.2	793.2	770.5	725.1	685.5	685.5
Operating lease ROU asset	-	23.5	21.5	20.4	17.2	22.9	22.0	22.0	21.0	20.0	20.4	19.3	19.3	16.4	15.3	10.1	9.6	9.6
Property, equipment, and capitalized software	17.4	24.3	25.3	24.9	23.9	25.4	26.8	26.8	28.7	29.8	30.4	29.3	29.3	29.3	29.5	5.6	5.1	5.1
Intangible assets, net	688.7	594.7	500.6	477.1	453.6	430.1	396.6	396.6	373.0	349.5	326.0	302.5	302.5	279.0	202.5	-	-	-
Other long-term assets	388.6	3.6	1.7	1.8	2.2	2.9	2.3	2.3	2.1	2.5	2.9	3.7	3.7	3.3	4.5	2.3	1.3	1.3
Total Assets	2,108.8	2,068.9	1,659.3	1,543.5	1,482.3	1,437.4	1,499.6	1,499.6	1,395.3	1,257.1	1,341.2	1,488.4	1,488.4	1,382.1	1,311.1	1,030.5	987.4	987.4
LIABILITIES AND SHAREHOLDERS' EQUITY																		
Accounts payable	8.7	39.8	15.1	11.4	8.7	6.2	17.7	17.7	5.8	10.1	15.3	14.6	14.6	20.3	19.9	11.9	6.9	6.9
Accrued liabilities	26.9	52.8	53.3	31.0	49.8	46.7	86.3	86.3	66.6	48.4	49.5	121.3	121.3	82.2	61.0	60.9	34.6	34.6
Commissions payable - current	78.5	104.2	122.0	103.0	104.0	103.6	118.7	118.7	94.9	88.2	80.9	98.8	98.8	58.9	62.2	65.1	63.9	63.9
Short-term operating lease liability	-	6.1	9.0	7.3	6.8	5.8	5.8	5.8	5.3	4.8	5.5	5.7	5.7	4.6	4.8	4.9	7.2	7.2
Deferred revenue	0.7	0.5	50.6	25.7	27.7	42.8	52.4	52.4	38.7	27.8	42.7	53.7	53.7	23.7	33.4	29.2	25.5	25.5
Current portion of long-term debt	4.2	5.3	5.3	19.3	-	-	75.0	75.0	75.0	40.0	65.0	39.5	39.5	39.5	-	-	-	-
Other current liabilities	8.3	8.3	10.1	12.1	13.3	12.7	14.1	14.1	13.7	14.7	23.1	4.4	4.4	4.1	3.7	3.7	3.3	3.3
Total Current Liabilities	127.4	217.1	265.5	209.8	210.3	217.8	370.0	370.0	300.0	234.0	282.0	338.1	338.1	233.4	185.0	175.7	141.5	141.5
Commissions payable - non-current	182.6	274.4	253.1	226.4	220.7	221.1	203.3	203.3	201.7	187.1	177.0	177.7	177.7	188.5	175.5	169.0	156.5	156.5
Long-term operating lease liability	-	19.8	38.4	36.7	35.2	40.8	39.5	39.5	38.2	36.8	36.2	34.9	34.9	33.1	31.3	30.0	28.7	28.7
Deferred tax liabilities	-	-	-	-	-	-	-	-	-	-	25.0	22.4	22.4	23.4	22.8	22.8	18.6	18.6
Long-term debt, net of current portion	396.4	665.1	504.8	490.2	496.2	497.0	422.7	422.7	410.3	413.3	416.3	447.9	447.9	446.4	560.0	581.8	636.7	636.7
Other non-current liabilities	3.3	-	5.8	7.7	9.8	6.9	9.1	9.1	9.2	6.8	7.4	9.2	9.2	6.3	2.5	2.2	10.6	10.6
Total Liabilities	709.6	1,176.4	1,067.6	970.9	972.2	983.5	1,044.6	1,044.6	959.4	878.2	943.9	1,030.0	1,030.0	931.1	977.1	981.5	992.7	992.7
Series Convertible Preferred - Par Value	-	-	49.3	49.3	49.3	49.3	49.3	49.3	50.2	51.1	52.0	53.0	53.0	53.9	54.9	55.9	56.9	56.9
Common Stock - Par Value (A&B)	0.0	0.0	0.0	0.0	0.0	0.0	0.0	0.0	0.0	0.0	0.0	0.0	0.0	0.0	0.0	0.0	0.0	0.0
Treasury Stock	-	-	(0.3)	(0.5)	(1.1)	(2.4)	(2.6)	(2.6)	(3.6)	(4.0)	(4.1)	(4.2)	(4.2)	(5.0)	(9.2)	(9.3)	(9.4)	(9.4)
Additional paid-in capital	399.2	561.4	626.3	630.3	646.2	649.5	654.1	654.1	659.1	662.3	665.0	669.3	669.3	674.4	682.9	725.2	727.6	727.6
Accumulated other comprehensive income	0.0	(0.1)	(0.1)	(0.1)	(0.1)	(0.1)	(0.1)	(0.1)	(0.1)	(0.2)	(0.1)	(0.2)	(0.2)	(0.2)	(0.1)	(0.1)	(0.1)	(0.1)
Accumulated deficit	(18.8)	(208.3)	(357.0)	(366.2)	(395.1)	(419.1)	(420.3)	(420.3)	(429.5)	(455.5)	(448.7)	(423.2)	(423.2)	(427.6)	(481.9)	(647.7)	(680.3)	(680.3)
Total Parent Net Equity	380.4	353.1	268.8	263.5	249.9	227.9	231.0	231.0	225.9	202.7	212.0	241.8	241.8	241.6	191.8	68.2	37.9	94.8
Non-controlling interests	1,018.7	539.4	273.6	259.8	210.8	176.7	174.6	174.6	159.8	125.1	133.2	163.6	163.6	155.5	87.3	(75.1)	(100.1)	(100.1)
Total Consolidated Equity	1,399.2	892.5	542.4	523.3	460.8	404.6	405.7	405.7	385.6	327.8	345.3	405.4	405.4	397.1	279.1	(6.9)	(62.2)	(5.3)
Total Liabilities and Shareholders' Equity	2,108.8	2,068.9	1,659.3	1,543.5	1,482.3	1,437.4	1,499.6	1,499.6	1,395.3	1,257.1	1,341.2	1,488.4	1,488.4	1,382.1	1,311.1	1,030.5	987.4	987.4
Liquidity																		
Current Ratio	3.1x	2.0x	1.6x	1.8x	1.8x	1.6x	1.3x	1.3x	1.3x	1.3x	1.2x	1.2x	1.2x	1.1x	1.6x	1.6x	2.0x	2.0x
Working Capital	264.45	211.93	149.10	165.65	157.84	128.55	106.43	106.43	97.09	67.13	52.07	62.36	62.36	27.54	103.80	111.78	144.29	144.29
Leverage																		
Net Debt to Equity	18.3%	68.6%	99.7%	99.6%	111.3%	127.8%	111.5%	111.5%	111.8%	146.7%	141.2%	120.1%	120.1%	126.3%	200.8%	-8463.3%	-1028.4%	#####
Net Debt to Capital	12.2%	29.6%	32.6%	33.8%	34.6%	36.0%	30.2%	30.2%	30.9%	38.3%	36.4%	32.7%	32.7%	36.3%	42.7%	56.7%	64.8%	64.8%

Source: Company Reports, Stonegate Capital Partners

INCOME STATEMENT

GoHealth, Inc. Consolidated Statements of Income (in US\$ M, except per share amounts) Fiscal Year End: December																							
	FY 2021	FY 2022	FY 2023	Q1 Mar-24	Q2 Jun-24	Q3 Sep-24	Q4 Dec-24	FY 2024	Q1 Mar-25	Q2 Jun-25	Q3 Sep-25	Q4 Dec-25	FY 2025	Q1 E Mar-26	Q2 E Jun-26	Q3 E Sep-26	Q4 E Dec-26	FY 2026E	Q1 E Mar-27	Q2 E Jun-27	Q3 E Sep-27	Q4 E Dec-27	FY 2027E
Revenue	\$ 1,062.4	\$ 631.7	\$ 734.7	\$ 185.6	\$ 105.9	\$ 118.3	\$ 389.1	\$ 798.9	\$ 221.0	\$ 94.0	\$ 34.2	\$ 12.6	\$ 361.8	\$ 24.5	\$ 33.9	\$ 41.7	\$ 163.9	\$ 264.1	\$ 62.7	\$ 80.6	\$ 101.0	\$ 227.2	\$ 471.6
Total Revenues	1,062.4	631.7	734.7	185.6	105.9	118.3	389.1	798.9	221.0	94.0	34.2	12.6	361.8	24.5	33.9	41.7	163.9	264.1	62.7	80.6	101.0	227.2	471.6
Cost of Revenue	239.3	187.7	159.0	38.0	20.7	19.7	52.2	130.6	39.3	32.4	20.1	4.3	96.1	17.1	24.1	30.3	48.1	119.7	20.8	33.3	43.6	29.0	126.7
Gross Profit	823.1	444.0	575.7	147.6	85.2	98.6	336.9	668.3	181.7	61.6	14.1	8.3	265.7	7.4	9.8	11.3	115.8	144.4	41.9	47.3	57.4	198.2	344.8
Marketing and advertising	365.1	207.6	205.0	52.8	38.0	45.3	99.6	235.7	67.4	28.1	17.5	3.4	116.4	5.3	7.4	9.2	37.7	59.6	13.4	17.7	22.2	68.2	121.5
Customer care and enrollment	320.2	260.9	209.2	47.9	39.3	45.6	89.7	222.4	51.7	26.2	17.2	10.9	106.0	4.9	9.7	13.5	39.3	67.5	12.5	23.0	32.8	56.8	125.2
Technology	48.4	46.1	43.3	10.6	8.6	9.8	12.1	41.0	9.0	8.2	10.0	7.7	34.9	8.0	9.0	9.0	10.0	36.0	10.0	10.0	10.0	11.0	41.0
General and administrative	98.2	118.6	93.1	16.9	16.4	17.1	31.7	82.1	22.7	21.9	27.7	18.5	90.8	21.5	21.5	21.5	21.5	86.0	24.5	24.5	24.5	24.5	98.0
Amortization of intangible assets	94.1	94.1	94.1	23.5	23.5	23.5	23.5	94.1	23.5	23.5	23.5	-	70.5	-	-	-	-	-	-	-	-	-	-
Operating lease impairment charges	-	25.3	2.7	-	-	-	-	-	0.7	0.1	206.2	53.0	260.0	-	-	-	-	-	-	-	-	-	-
Other Expenses	386.6	10.1	10.0	-	-	-	-	-	-	-	-	-	-	-	-	-	-	-	-	-	-	-	-
Total Operating Expenses	1,312.5	762.7	657.4	151.6	125.8	141.3	256.6	675.3	175.0	108.0	302.0	93.6	678.6	39.7	47.6	53.2	108.5	249.0	60.5	75.1	89.5	160.5	385.6
Operating Income	(489.4)	(318.7)	(81.7)	(4.0)	(40.6)	(42.7)	80.3	(7.0)	6.7	(46.4)	(287.9)	(85.3)	(412.9)	(32.2)	(37.8)	(41.9)	7.3	(104.6)	(18.6)	(27.8)	(32.2)	37.8	(40.8)
Interest expense	33.5	57.1	69.5	18.0	18.1	19.1	17.7	72.9	16.0	16.9	24.8	29.7	87.3	26.2	26.2	26.2	26.2	104.9	26.2	26.2	26.2	26.2	104.9
Other (income) expense, net	11.3	(0.1)	(0.0)	(0.6)	0.6	(77.1)	2.2	(74.9)	(0.6)	0.0	1.7	(0.3)	0.9	-	-	-	-	-	-	-	-	-	-
Profit Before Taxes	(534.2)	(375.6)	(151.1)	(21.4)	(59.4)	15.4	60.4	(5.1)	(8.7)	(63.3)	(314.4)	(114.7)	(501.1)	(58.5)	(64.0)	(68.1)	(19.0)	(209.6)	(44.8)	(54.0)	(58.4)	11.5	(145.7)
Provision for Income Tax	(0.0)	0.8	0.2	(0.1)	(0.0)	(0.0)	2.4	2.3	1.1	(0.4)	(0.5)	(3.6)	(3.3)	(2.9)	(0.4)	(0.1)	(0.6)	(4.0)	(2.2)	(0.3)	(0.1)	0.4	(2.3)
Net Income	(534.2)	(376.4)	(151.3)	(21.3)	(59.3)	15.4	58.0	(7.3)	(9.8)	(63.0)	(313.9)	(111.1)	(497.8)	(55.5)	(63.7)	(68.0)	(18.4)	(205.6)	(42.6)	(53.7)	(58.3)	11.2	(143.4)
less: Non-Controlling Interest	(344.8)	(227.7)	(88.0)	(12.1)	(33.3)	8.6	32.5	(4.4)	(5.4)	(61.7)	(148.1)	(25.5)	(240.6)	(22.2)	(25.5)	(27.2)	(7.4)	(82.2)	(17.0)	(21.5)	(23.3)	4.5	(57.4)
Net Income To GOCCO	(189.4)	(148.7)	(63.3)	(9.2)	(26.0)	6.8	25.5	(2.9)	(4.4)	(1.3)	(165.8)	(85.6)	(257.1)	(33.3)	(38.2)	(40.8)	(11.0)	(123.3)	(25.5)	(32.2)	(35.0)	6.7	(86.1)
Accumulated Dividends*	-	0.9	3.6	0.9	0.9	0.9	0.9	3.6	0.9	1.0	1.0	1.0	3.9	1.0	1.0	1.0	1.0	4.0	1.0	1.0	1.0	1.0	4.0
Basic EPS after Accumulated Dividends	\$ (26.80)	\$ (17.72)	\$ (7.19)	\$ (1.04)	\$ (2.70)	\$ 0.58	\$ 2.42	\$ (0.66)	\$ (0.52)	\$ (0.21)	\$ (11.80)	\$ (6.69)	\$ (20.17)	\$ (2.65)	\$ (3.03)	\$ (3.23)	\$ (0.93)	\$ (9.83)	\$ (2.05)	\$ (2.56)	\$ (2.78)	\$ 0.44	\$ (6.95)
Diluted EPS after Accumulated Dividends	\$ (26.80)	\$ (17.72)	\$ (7.19)	\$ (1.04)	\$ (2.70)	\$ 0.46	\$ 1.56	\$ (0.66)	\$ (0.52)	\$ (0.21)	\$ (11.80)	\$ (6.69)	\$ (20.17)	\$ (2.65)	\$ (3.03)	\$ (3.23)	\$ (0.93)	\$ (9.83)	\$ (2.05)	\$ (2.56)	\$ (2.78)	\$ 0.52	\$ (6.95)
WTD Shares Out - Basic	7.1	8.4	9.3	9.7	10.0	10.1	10.2	10.0	10.4	10.8	14.1	12.9	12.9	13.0	13.0	13.0	13.0	13.0	13.0	13.0	13.0	13.0	13.0
WTD Shares Out - Diluted	7.1	8.4	9.3	9.7	10.0	14.6	16.4	10.0	10.4	10.8	14.1	12.9	12.9	13.0	13.0	13.0	13.0	13.0	13.0	13.0	13.0	13.0	13.0
EBITDA	(393.2)	(211.5)	24.1	22.8	(15.0)	60.9	105.0	173.7	33.7	(20.2)	(262.6)	(84.6)	(333.7)	(12.2)	(17.8)	(21.9)	27.3	(24.6)	6.4	(2.8)	(7.2)	62.8	59.2
Adjusted EBITDA	\$ 33.8	\$ (129.8)	\$ 75.1	\$ 26.9	\$ (12.3)	\$ (12.1)	\$ 117.8	\$ 120.3	\$ 41.6	\$ (11.3)	\$ (47.1)	\$ (18.3)	\$ (35.1)	\$ (0.7)	\$ (6.3)	\$ (10.4)	\$ 38.8	\$ 21.4	\$ 18.9	\$ 9.7	\$ 5.3	\$ 75.3	\$ 109.2

Margin Analysis																							
Gross Margin	77.5%	70.3%	78.4%	79.5%	80.5%	83.4%	86.6%	83.7%	82.2%	65.5%	41.2%	65.6%	73.4%	30.3%	28.9%	27.2%	70.6%	54.7%	66.8%	58.7%	56.8%	87.2%	73.1%
Operating Margin	-46.1%	-50.4%	-11.1%	-2.2%	-38.4%	-36.1%	20.6%	-0.9%	3.0%	-49.3%	-842.2%	-674.6%	-114.1%	-131.3%	-111.4%	-100.4%	4.4%	-39.6%	-29.6%	-34.5%	-31.9%	16.6%	-8.6%
EBITDA Margin	3.2%	-20.5%	10.2%	14.5%	-11.6%	-10.2%	30.3%	15.1%	18.8%	-12.1%	-137.7%	-144.6%	-9.7%	-3.0%	-18.5%	-24.9%	23.6%	8.1%	30.1%	12.1%	5.3%	33.1%	23.2%
Pre-Tax Margin	-50.3%	-59.5%	-20.6%	-11.5%	-56.1%	13.0%	15.5%	-0.6%	-3.9%	-67.4%	-919.7%	-907.2%	-138.5%	-238.2%	-188.6%	-163.4%	-11.6%	-79.4%	-71.5%	-67.0%	-57.8%	5.1%	-30.9%
Net Income Margin	-50.3%	-59.6%	-20.6%	-11.5%	-56.0%	13.0%	14.9%	-0.9%	-4.4%	-67.0%	-918.3%	-878.7%	-137.6%	-226.3%	-187.6%	-163.1%	-11.2%	-77.8%	-67.9%	-66.6%	-57.7%	4.9%	-30.4%
Tax Rate	0.0%	-0.2%	-0.1%	0.3%	0.1%	-0.1%	4.0%	-44.9%	-12.7%	0.6%	0.2%	3.1%	0.7%	5.0%	0.6%	0.2%	3.1%	1.9%	5.0%	0.6%	0.2%	3.1%	1.6%

Growth Rate Y/Y																							
Total Revenue	-	-40.5%	16.3%	1.3%	-25.9%	-10.4%	40.6%	8.7%	19.1%	-11.2%	-71.1%	-96.8%	-54.7%	-88.9%	-63.9%	21.9%	1196.8%	-27.0%	155.6%	137.5%	142.3%	38.6%	78.6%
Total cost of revenues	-	-41.9%	-13.8%	5.7%	-21.1%	5.4%	16.4%	2.7%	15.4%	-14.1%	113.8%	-63.5%	0.5%	-77.3%	-55.9%	-82.4%	16.0%	-63.3%	52.5%	57.8%	68.3%	47.9%	54.9%
Operating Income	-	-34.9%	-74.4%	-29.9%	-23.4%	12.4%	433.0%	-91.4%	-265.4%	14.2%	574.7%	-206.2%	5759.2%	-583.2%	-18.5%	-85.5%	-108.5%	-74.7%	-42.3%	-28.5%	-23.2%	420.1%	-61.0%
Pre-Tax Income	-	-29.7%	-59.8%	-5.2%	-15.6%	-127.3%	-3252.2%	-96.7%	-59.5%	6.7%	-2147.6%	-289.9%	9818.6%	573.2%	1.1%	-78.3%	-83.5%	-58.2%	-23.3%	-15.6%	-14.2%	-160.7%	-30.5%
Net Income	-	-29.5%	-59.8%	-5.3%	-15.5%	-127.3%	-2627.2%	-95.2%	-54.2%	6.2%	-2142.9%	-291.6%	6700.9%	467.5%	1.1%	-78.3%	-83.5%	-58.7%	-23.3%	-15.6%	-14.2%	-160.7%	-30.2%

*Current quarter accumulated dividends are estimates
Source: Company Reports, Stonegate Capital Partners estimates

IMPORTANT DISCLOSURES AND DISCLAIMER

- (a) The research analyst and/or a member of the analyst's household do not have a financial interest in the debt or equity securities of the subject company.
- (b) The research analyst responsible for the preparation of this report has not received compensation that is based upon Stonegate's investment banking revenues.
- (c) Stonegate or any affiliate have not managed or co-managed a public offering of securities for the subject company in the last twelve months, received investment banking compensation from the subject company in the last 12 months, nor expects or receive or intends or seek compensation for investment banking services from the subject company in the next three months.
- (d) Stonegate's equity affiliate, Stonegate Capital Partners, "SCP" has a contractual agreement with the subject company to provide research services, investor relations support, and investor outreach. SCP receives a monthly retainer for these non-investment banking services.
- (e) Stonegate or its affiliates do not beneficially own 1% or more of any class of common equity securities of the subject company.
- (f) Stonegate does not make a market in the subject company.
- (g) The research analyst has not received any compensation from the subject company in the previous 12 months.
- (h) Stonegate, the research analyst, or associated person of Stonegate with the ability to influence the content of the research report knows or has reason to know of any material conflicts of interest at the time of publication or distribution of the research report.
- (i) No employee of Stonegate has a position as an officer or director of the subject company.

Ratings - Stonegate does not provide ratings for the covered companies.

Distribution of Ratings - Stonegate does not provide ratings for covered companies.

Price Chart - Stonegate does not have, nor has previously had, a rating for its covered companies.

Price Targets - Stonegate does not provide price targets for its covered companies. However, Stonegate does provide valuation analysis.

Regulation Analyst Certification:

I, Dave Storms, CFA, hereby certify that all views expressed in this report accurately reflect my personal views about the subject company or companies and its or their securities. I also certify that no part of my compensation was, is, or will be directly or indirectly related to the specific recommendations or views expressed in this report.

For Additional Information Contact:

Stonegate Capital Partners, Inc.

Dave Storms, CFA

Dave@stonegateinc.com

214-987-4121

Please note that this report was originally prepared and issued by Stonegate for distribution to their market professional and institutional investor customers. Recipients who are not market professional or institutional investor customers of Stonegate should seek the advice of their independent financial advisor prior to taking any investment decision based on this report or for any necessary explanation of its contents. The information contained herein is based on sources which we believe to be reliable but is not necessarily complete and its accuracy cannot be guaranteed. Because the objectives of individual clients may vary, this report is not to be construed as an offer or the solicitation of an offer to sell or buy the securities herein mentioned. This report is the independent work of Stonegate Capital Partners and is not to be construed as having been issued by, or in any way endorsed or guaranteed by, any issuing companies of the securities mentioned herein. The firm and/or its employees and/or its individual shareholders and/or members of their families and/or its managed funds may have positions or warrants in the securities mentioned and, before or after your receipt of this report, may make or recommend purchases and/or sales for their own accounts or for the accounts of other customers of the firm from time to time in the open market or otherwise. While we endeavor to update the information contained herein on a reasonable basis, there may be regulatory, compliance, or other reasons that prevent us from doing so. The opinions or information expressed are believed to be accurate as of the date of this report; no subsequent publication or distribution of this report shall mean or imply that any such opinions or information remains current at any time after the date of this report. All opinions are subject to change without notice, and we do not undertake to advise you of any such changes. Reproduction or redistribution of this report without the expressed written consent of Stonegate Capital Partners is prohibited. Additional information on any securities mentioned is available on request.